



Light efficiency:

105 Lumen/Watt

Light quality:

CRI: 79,2

Color temperature:

2678 K

Output: 297 lm

Peak: 34,2 cd

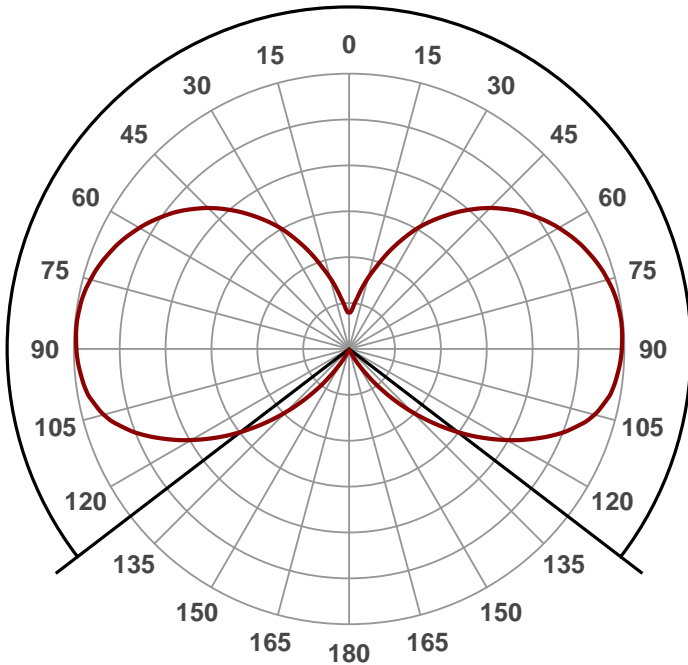
Power: 2,8 W

PF: 0,49



Beam angle

254,8°



Product name:

ZLFA-E27-G45-27B410

Date and time:

19.6.2015 16:25:16

Item number::

062B5-C804

Additional Information::

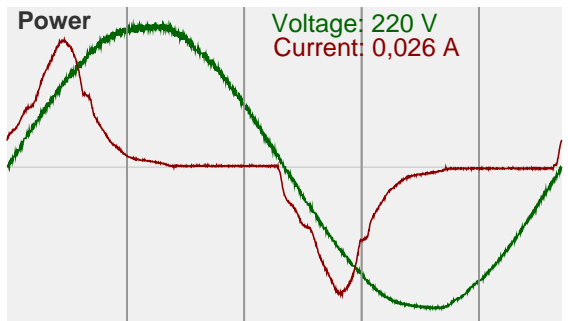
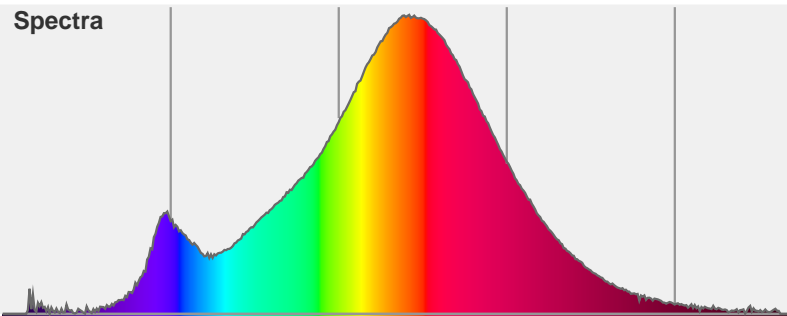
2700K 410LM küçük ampul

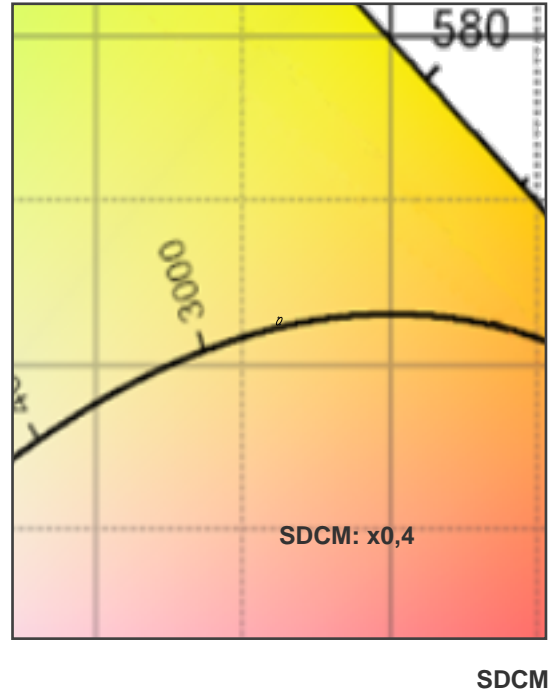
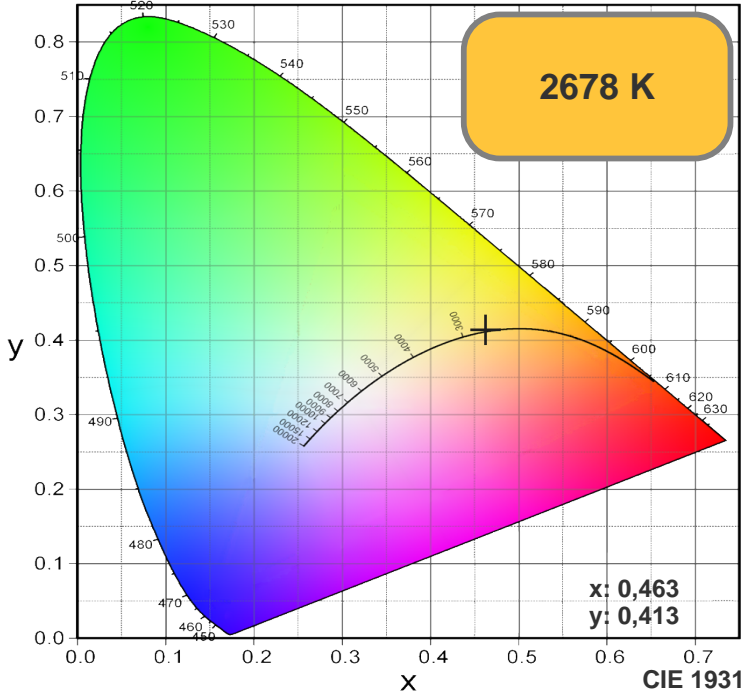
Color



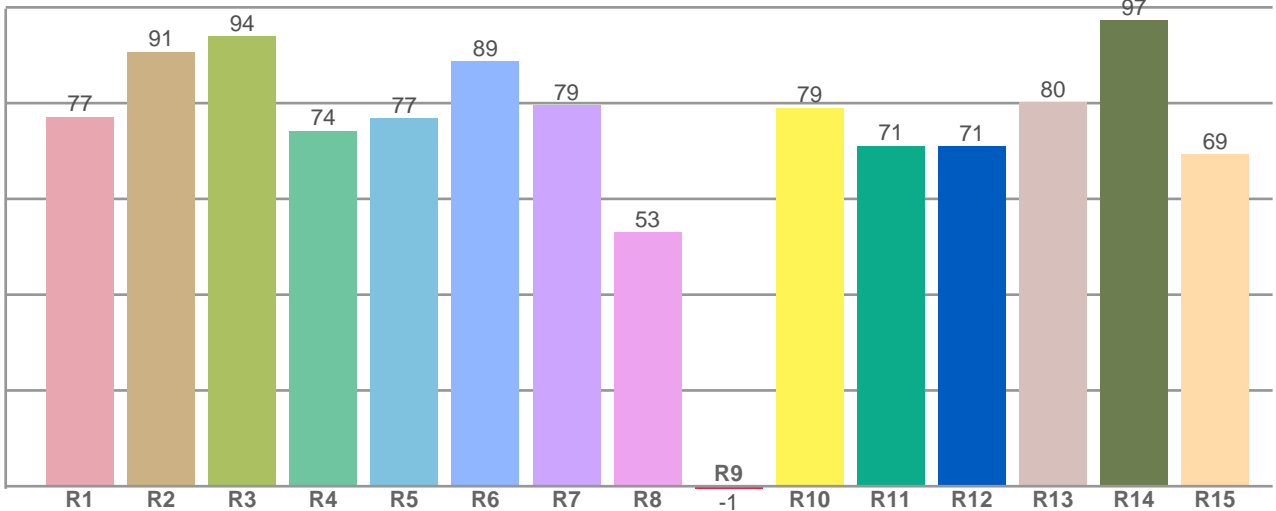
CIE1931  
x: 0,463  
y: 0,413

Spectra





R1-R8 = CRI: 79,2



R1	R2	R3	R4	R5	R6	R7	R8	R9	R10	R11	R12	R13	R14	R15
77,10	90,64	93,96	74,15	76,81	88,76	79,45	52,99	-0,55	78,99	71,02	70,96	80,14	97,31	69,24

Color parameters

Chromaticity coordinates:  $x=0,463$   $y=0,413$   $u'=0,263$   $v'=0,353$   
 Color temperature: 2678 Kelvin