



Light efficiency:



Light quality:



Color temperature:



Output: 141 lm

Peak: 13,5 cd

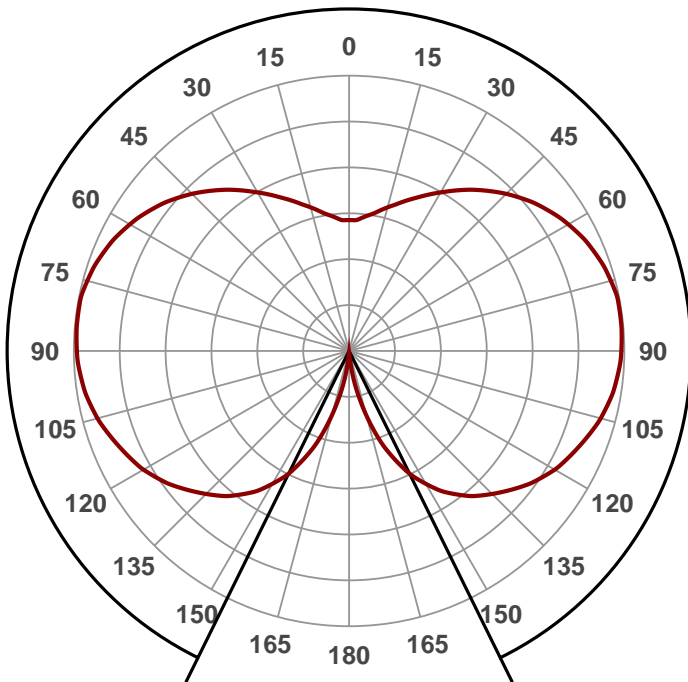
Power: 1,4 W

PF: 0,48



Beam angle

307,5°



Product name:

ZLFA-E14-C35-30S180

Date and time:

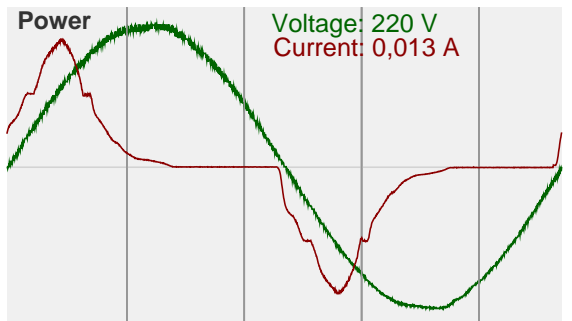
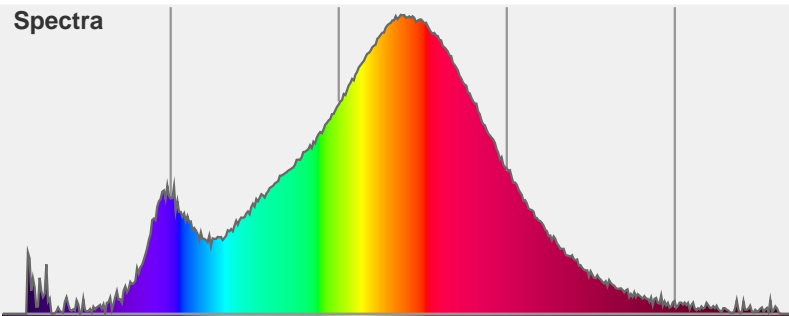
19.6.2015 16:23:37

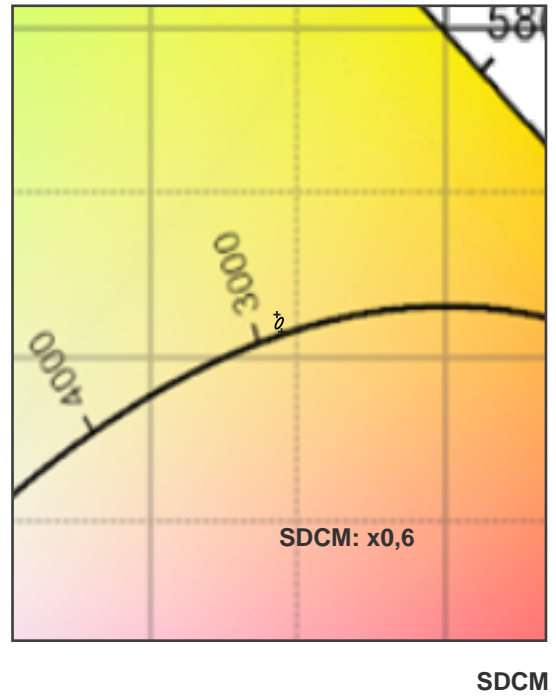
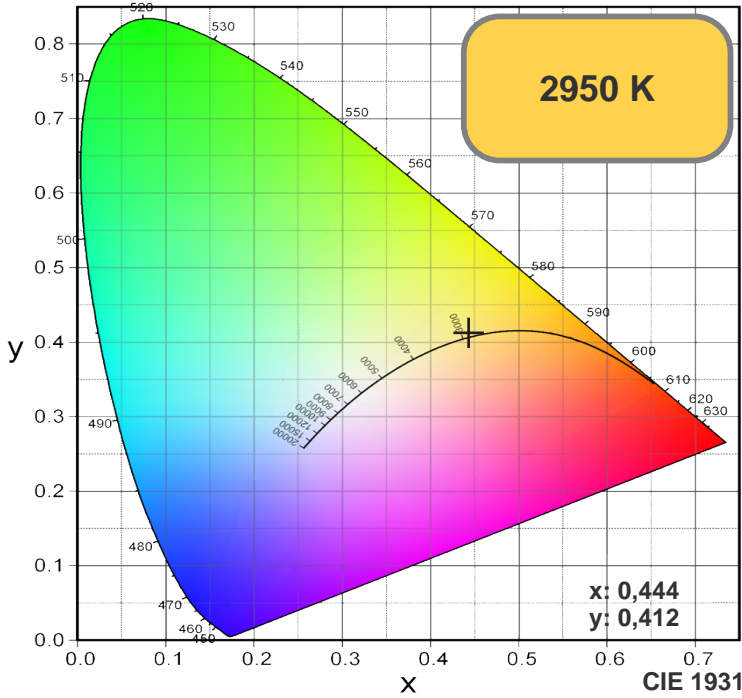
Color



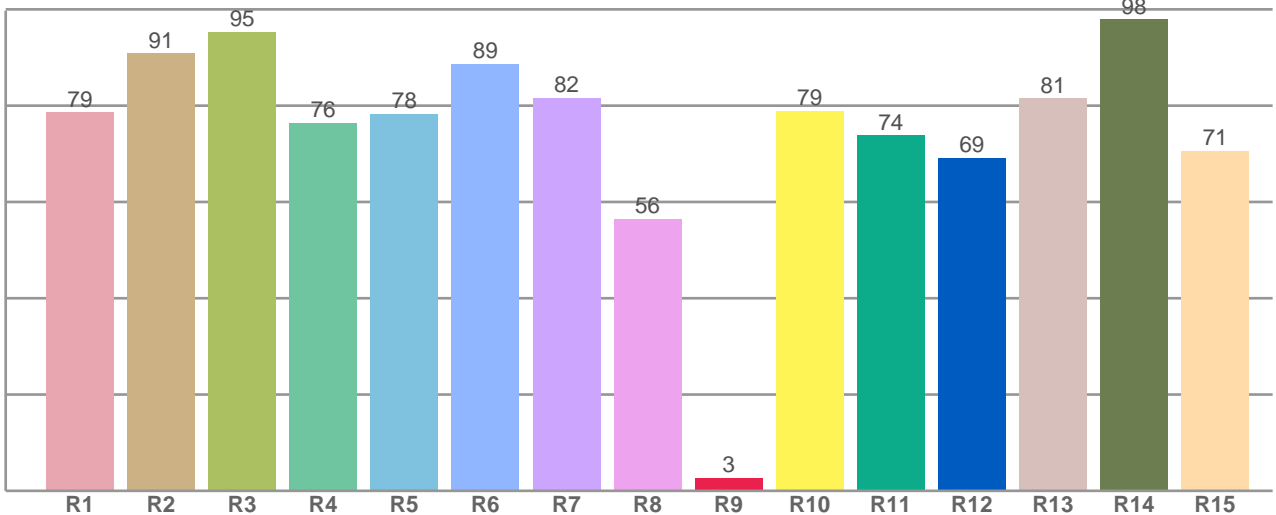
CIE1931
x: 0,444
y: 0,412

Spectra





R1-R8 = CRI: 80,8



R1	R2	R3	R4	R5	R6	R7	R8	R9	R10	R11	R12	R13	R14	R15
78,58	90,80	95,29	76,38	78,30	88,68	81,62	56,43	2,69	78,92	73,78	69,13	81,44	97,94	70,59

Color parameters

Chromaticity coordinates: x=0,444 y=0,412 u'=0,252 v'=0,350
Color temperature: 2950 Kelvin