



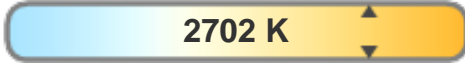
Light efficiency:



Light quality:



Color temperature:



Output: 370 lm

Peak: 39,7 cd

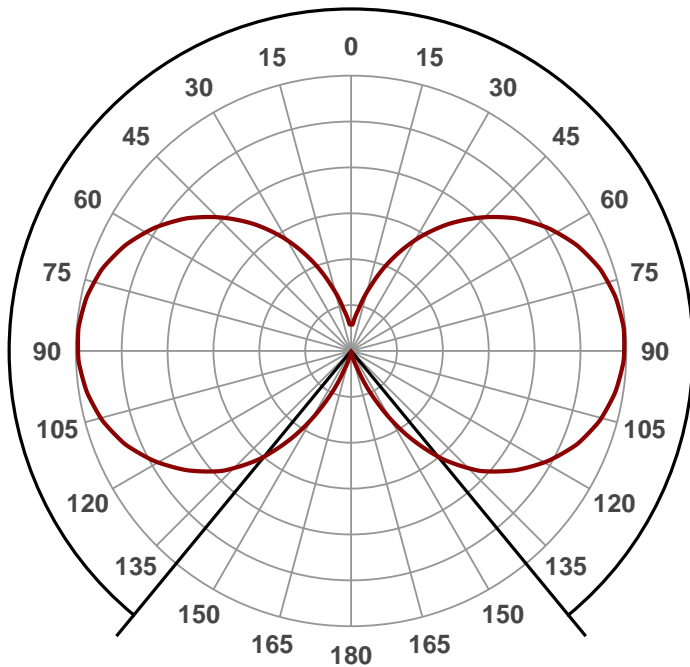
Power: 2,9 W

PF: 0,49



Beam angle

**281,1°**



Product name:

**ZLFA-E14-C35-27B410**

Date and time:

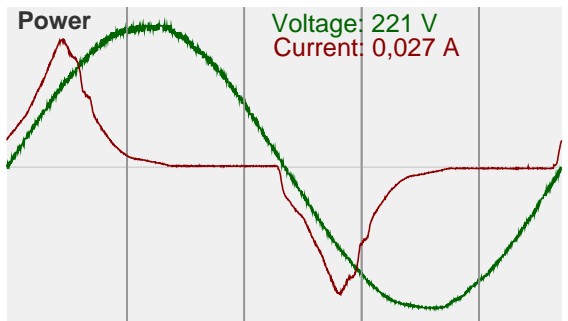
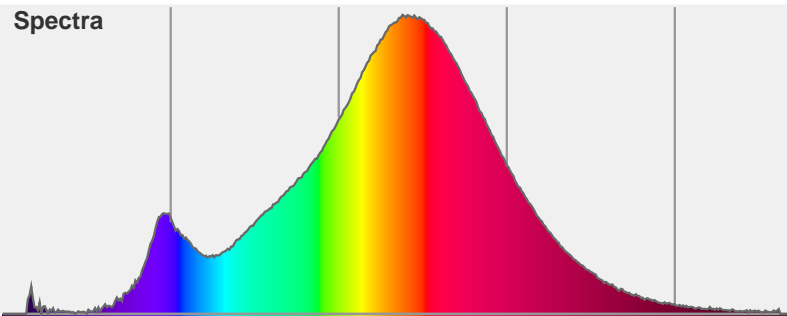
**26.6.2015 14:35:36**

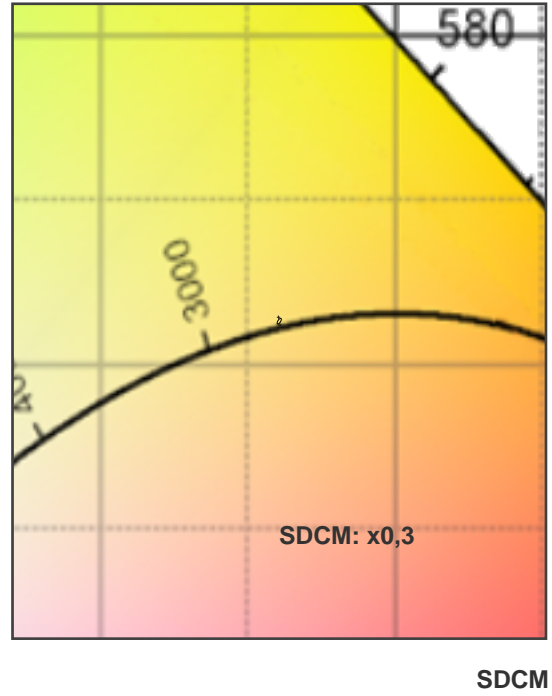
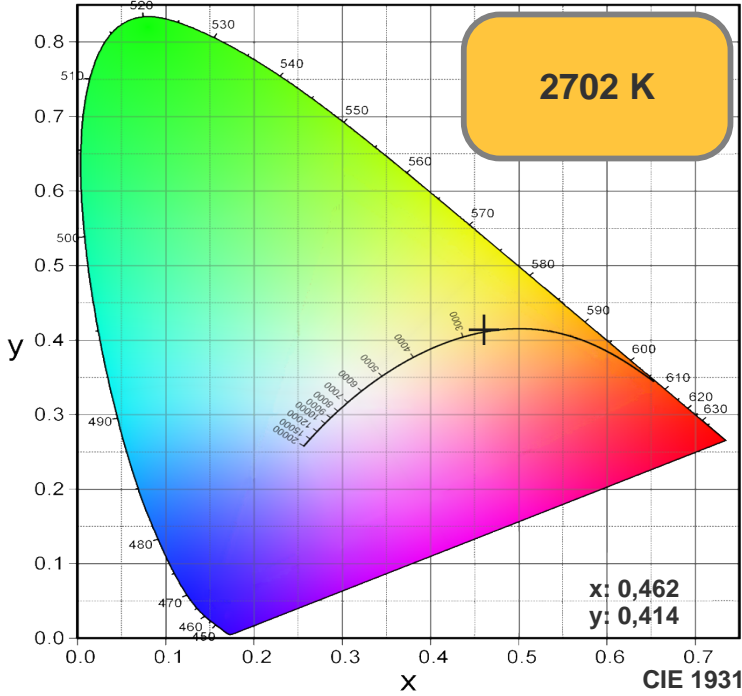
Color



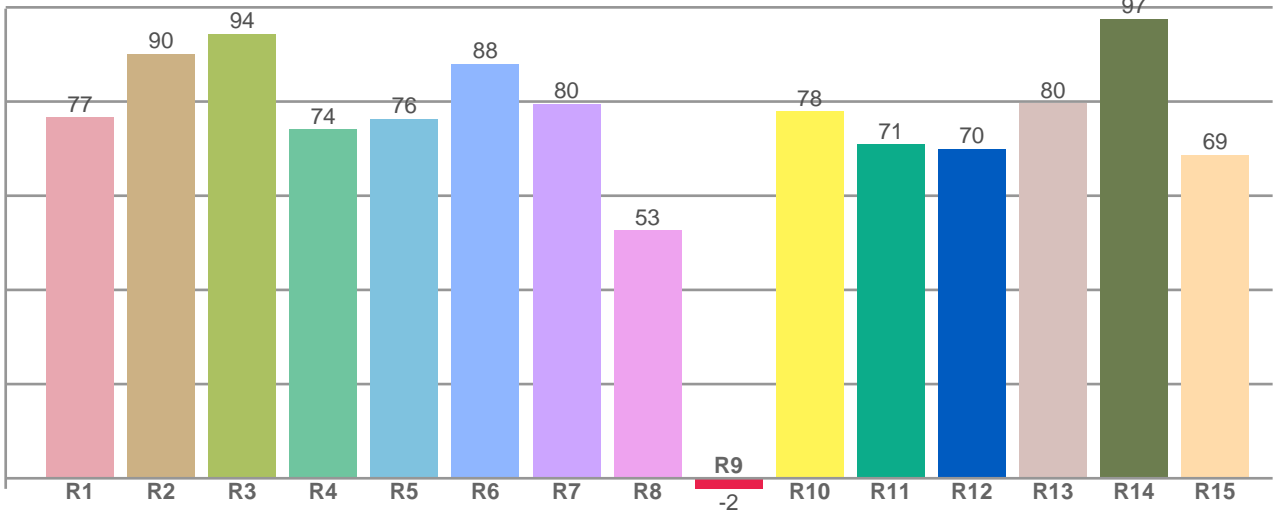
CIE1931  
x: 0,462  
y: 0,414

Spectra





R1-R8 = CRI: 78,9



| R1    | R2    | R3    | R4    | R5    | R6    | R7    | R8    | R9    | R10   | R11   | R12   | R13   | R14   | R15   |
|-------|-------|-------|-------|-------|-------|-------|-------|-------|-------|-------|-------|-------|-------|-------|
| 76,64 | 90,14 | 94,34 | 74,02 | 76,33 | 88,02 | 79,53 | 52,57 | -2,24 | 77,89 | 70,89 | 69,90 | 79,64 | 97,50 | 68,67 |

Color parameters

Chromaticity coordinates:  $x=0,462$   $y=0,414$   $u'=0,262$   $v'=0,352$   
 Color temperature: 2702 Kelvin