



Light efficiency:



Light quality:



Color temperature:

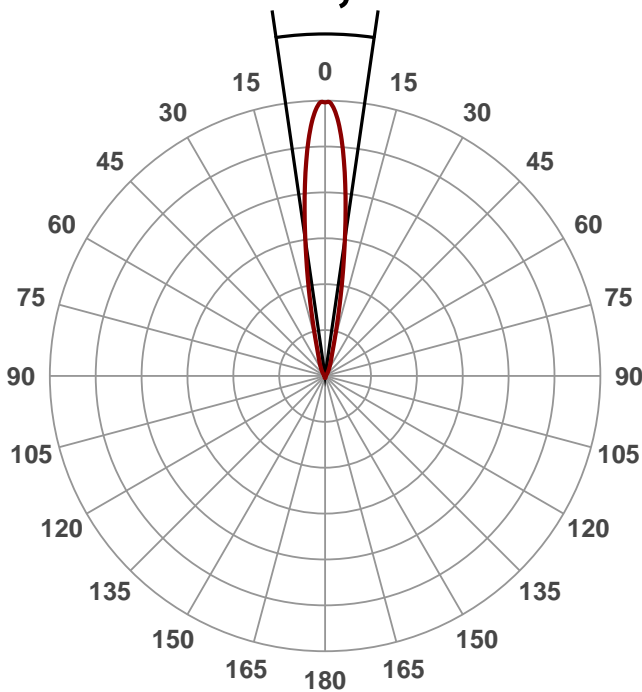


Output: 2179 lm
Peak: 14240 cd
Power: 20,0 W
PF: 0,86



Beam angle

16,5°



Product name:
ZLAR111-1520-5020

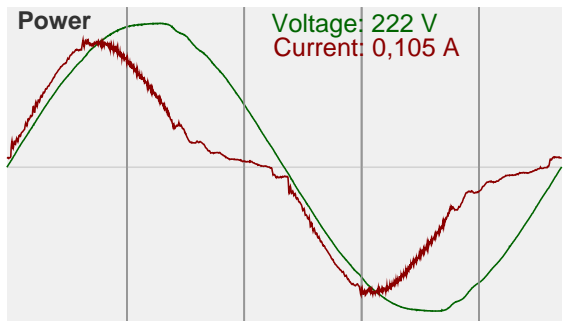
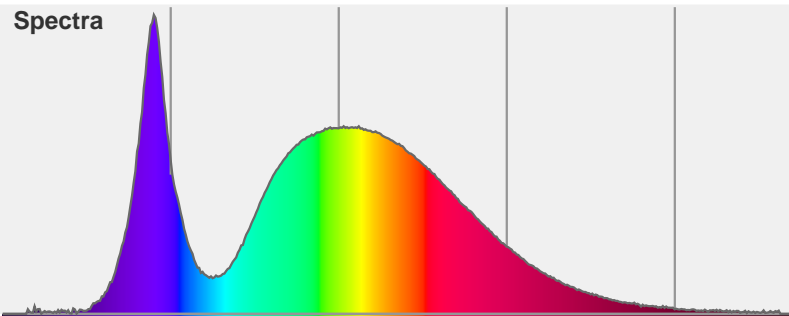
Date and time:
1.9.2015 13:20:30

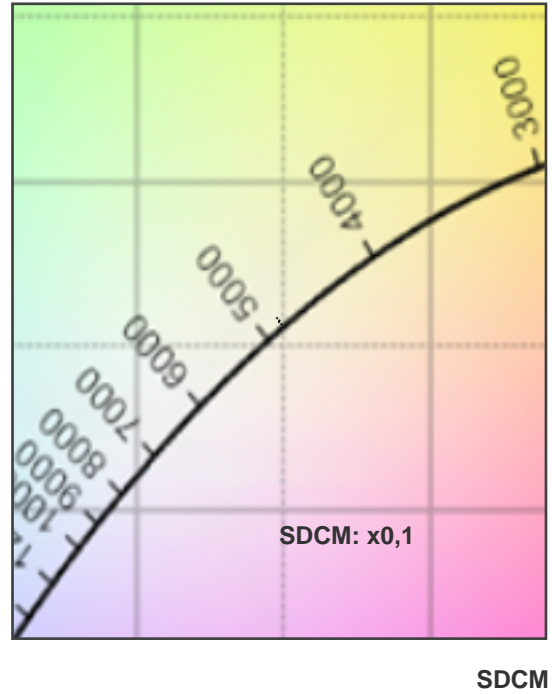
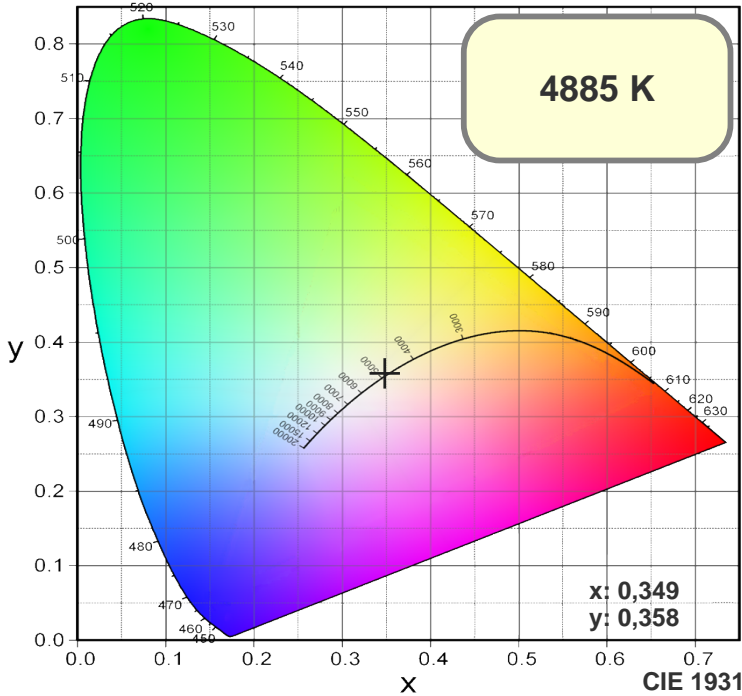
Color



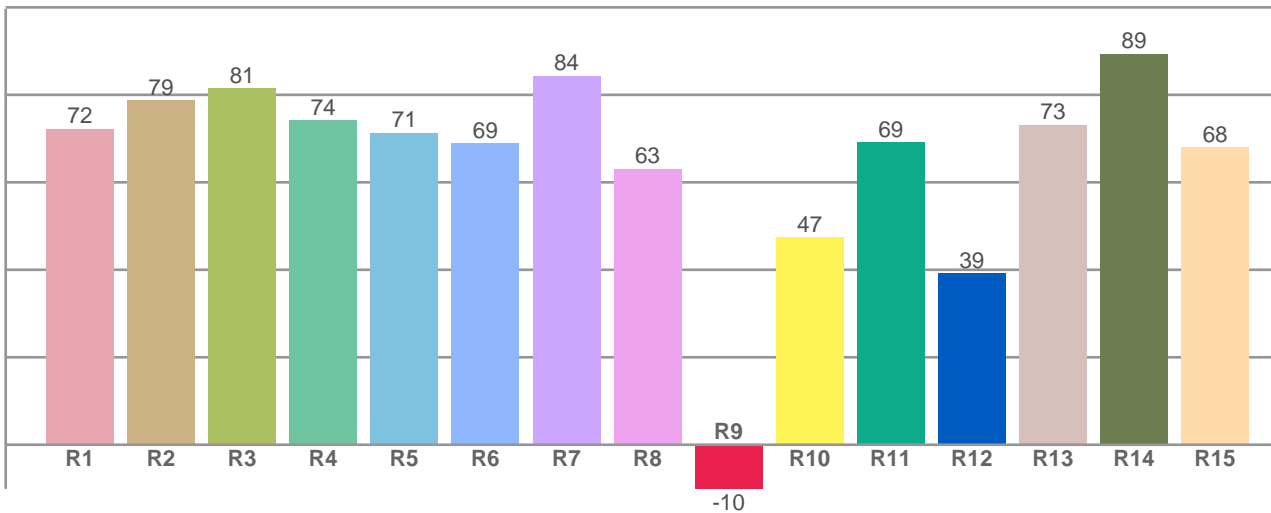
CIE1931
x: 0,349
y: 0,358

Spectra





R1-R8 = CRI: 74,3



R1	R2	R3	R4	R5	R6	R7	R8	R9	R10	R11	R12	R13	R14	R15
72,18	78,77	81,44	74,19	71,27	68,84	84,27	63,06	-10,08	47,37	69,10	39,16	73,12	89,30	67,94

Color parameters

Chromaticity coordinates: $x=0,349$ $y=0,358$ $u'=0,212$ $v'=0,325$
 Color temperature: 4885 Kelvin