



Light efficiency:

111 Lumen/Watt

Light quality:

CRI: 74,3

Color temperature:

4861 K

Output: 1692 lm

Peak: 11483 cd

Power: 15,2 W

PF: 0,97



Product name:

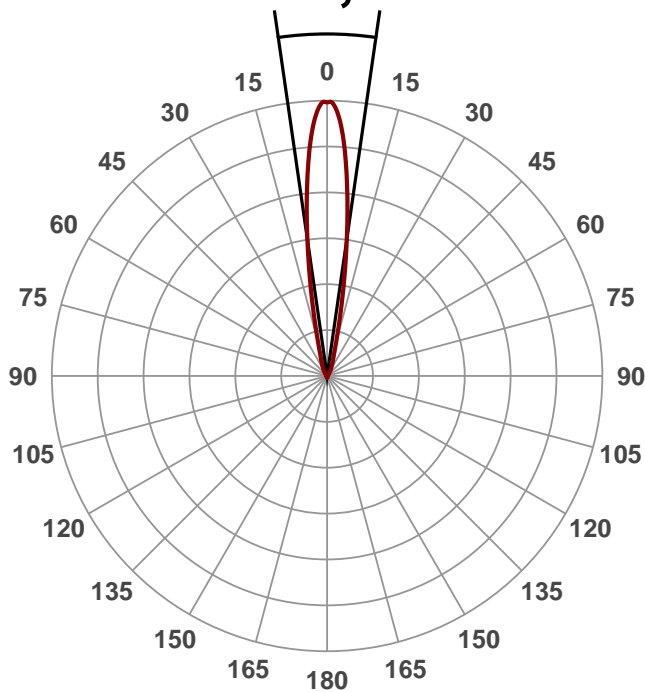
ZLAR111-1515-5020

Date and time:

1.9.2015 13:18:08

Beam angle

16,4°

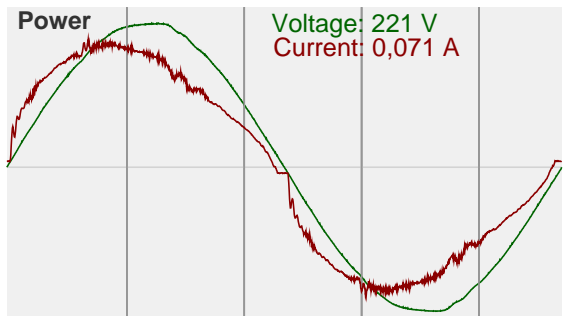
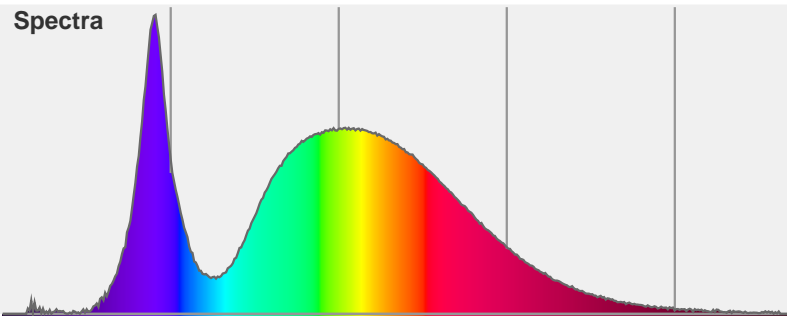


Color

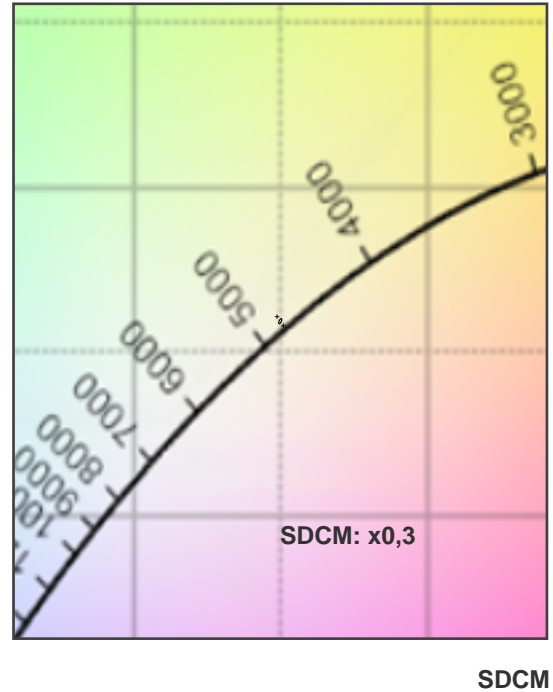
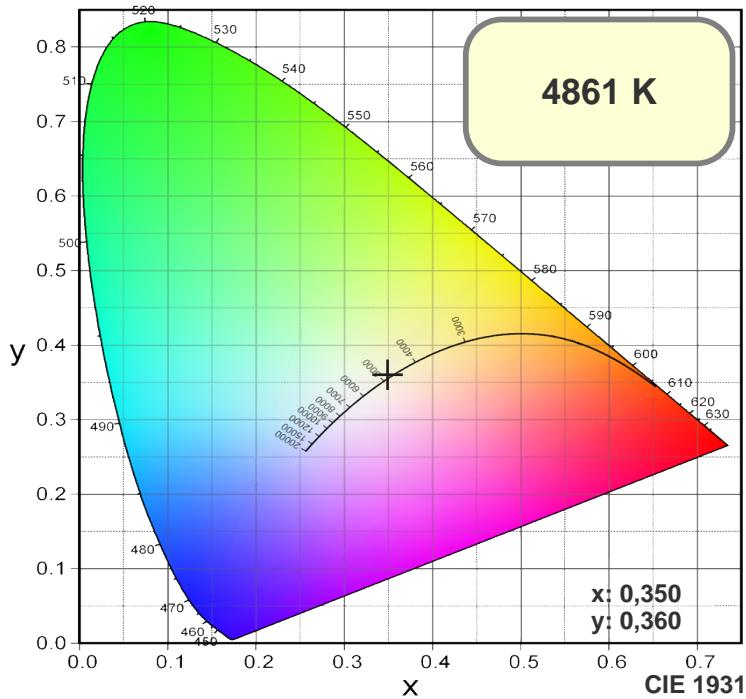


CIE1931
x: 0,350
y: 0,360

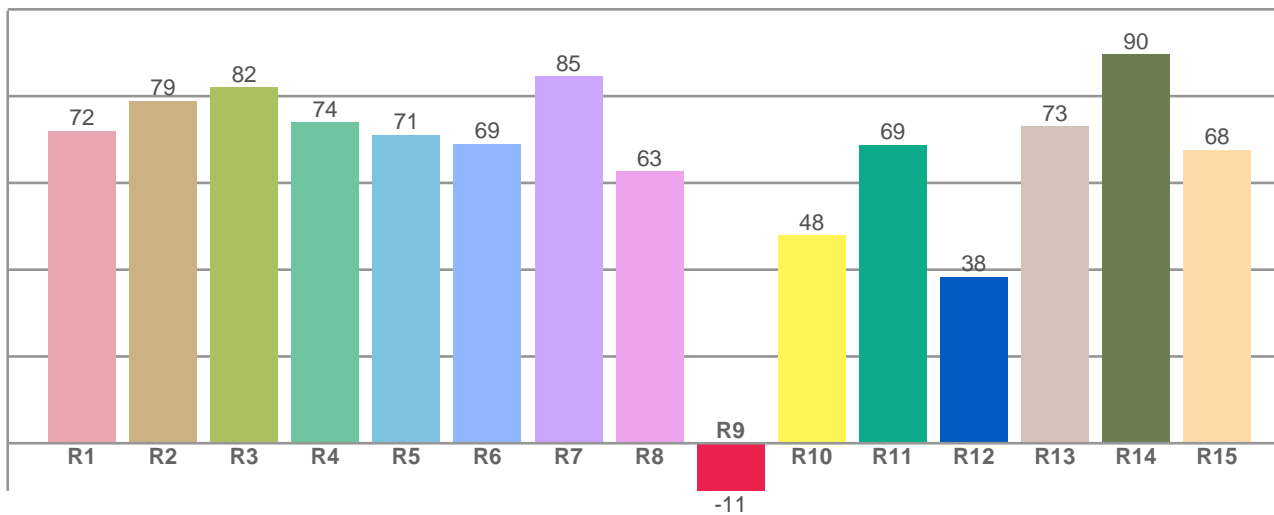
Spectra



Light measurement was made using the Viso Systems - Light Inspector. www.visosystems.com. copyright 2012



R1-R8 = CRI: 74,3



| R1 | R2 | R3 | R4 | R5 | R6 | R7 | R8 | R9 | R10 | R11 | R12 | R13 | R14 | R15 |
|-------|-------|-------|-------|-------|-------|-------|-------|--------|-------|-------|-------|-------|-------|-------|
| 71,98 | 78,92 | 81,98 | 73,98 | 71,02 | 69,02 | 84,60 | 62,69 | -10,97 | 47,82 | 68,79 | 38,34 | 73,06 | 89,63 | 67,55 |

Color parameters

Chromaticity coordinates: $x=0,350$ $y=0,360$ $u'=0,211$ $v'=0,326$
Color temperature: 4861 Kelvin