



Light efficiency:



Light quality:



Color temperature:

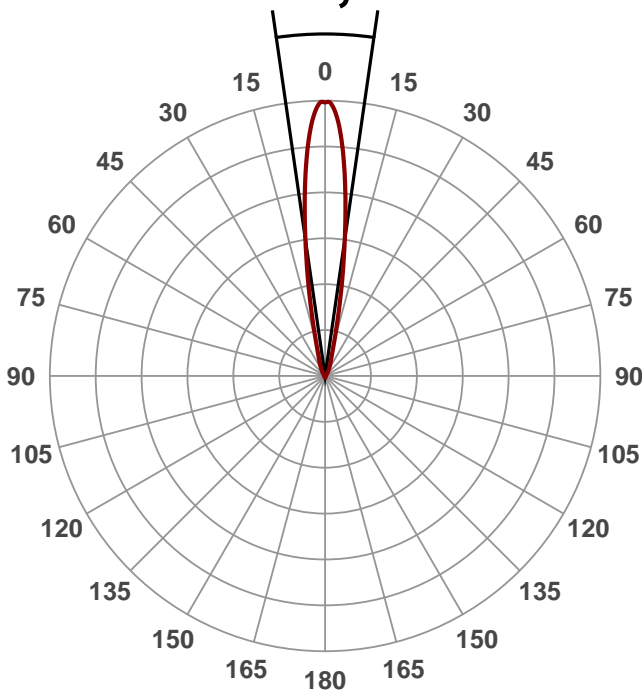


Output: 1464 lm
Peak: 9869 cd
Power: 12,7 W
PF: 0,96



Beam angle

16,4°



Product name:
ZLAR111-1512-5020

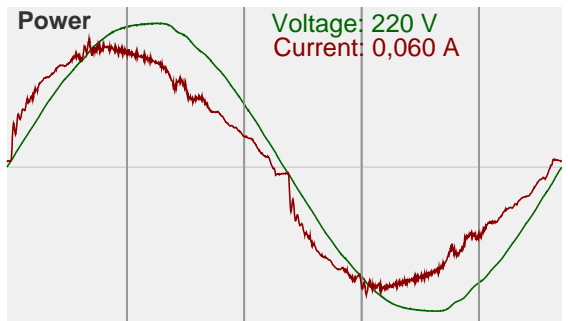
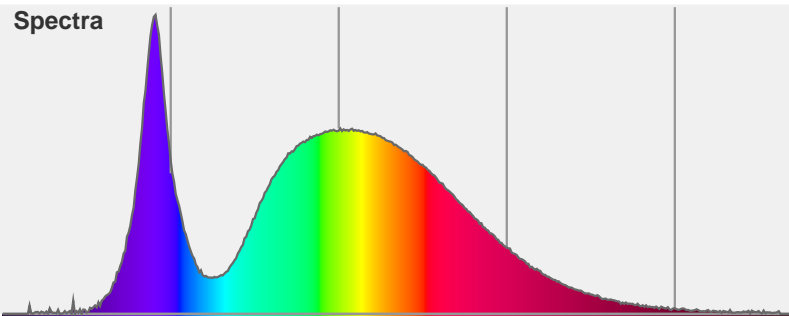
Date and time:
1.9.2015 13:16:41

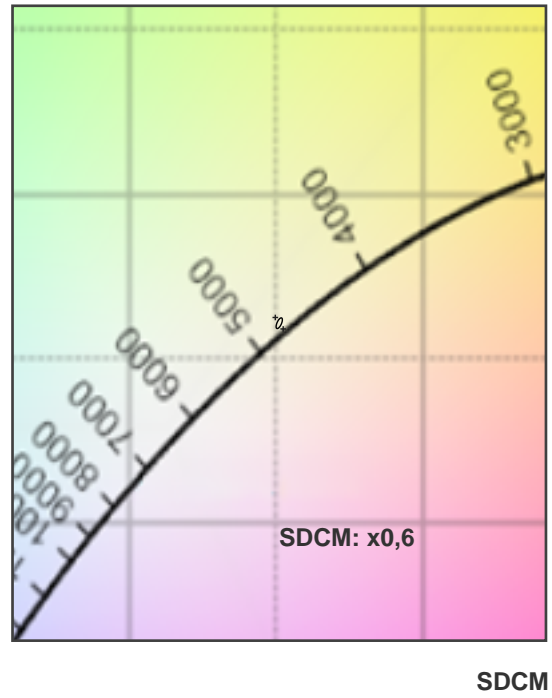
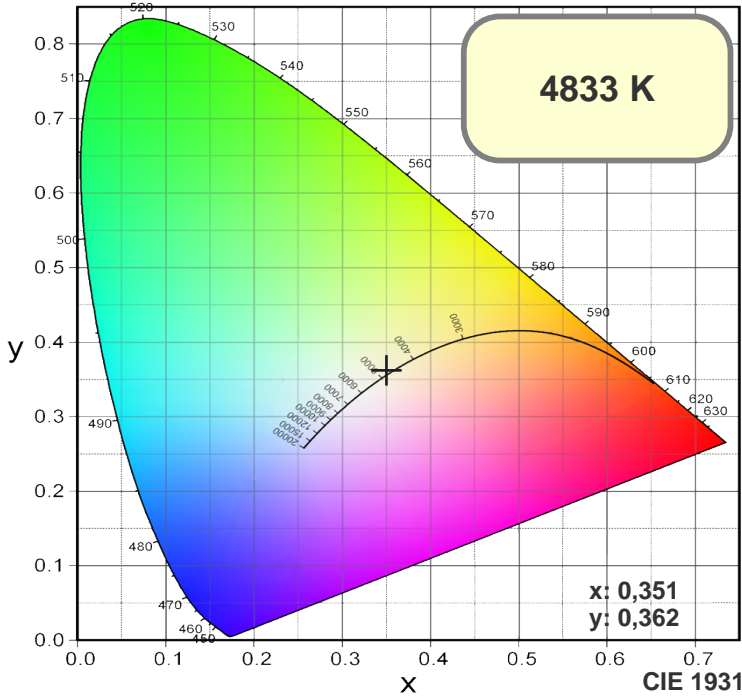
Color



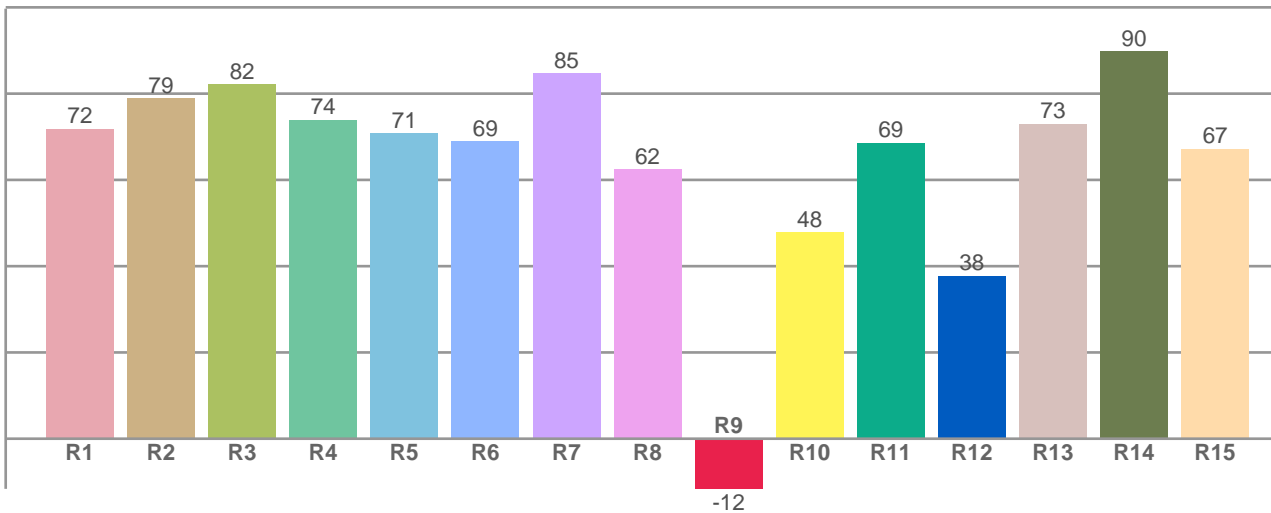
CIE1931
x: 0,351
y: 0,362

Spectra





R1-R8 = CRI: 74,2



R1	R2	R3	R4	R5	R6	R7	R8	R9	R10	R11	R12	R13	R14	R15
71,82	78,88	82,13	73,85	70,81	68,97	84,71	62,44	-11,62	47,80	68,61	37,70	72,93	89,73	67,23

Color parameters

Chromaticity coordinates: $x=0,351$ $y=0,362$ $u'=0,211$ $v'=0,327$
 Color temperature: 4833 Kelvin