



Light efficiency:



Light quality:



Color temperature:

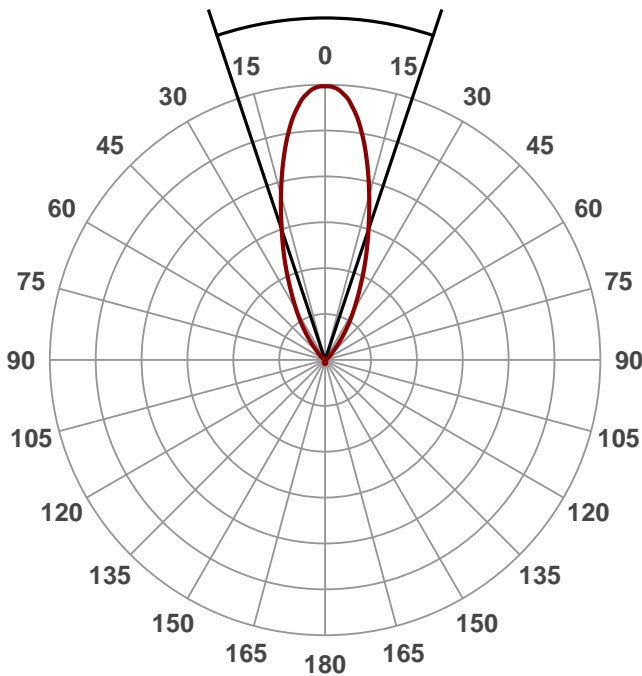


Output: 1246 lm
Peak: 2219 cd
Power: 12,8 W
PF: 0,96



Beam angle

36,8°



Product name:
ZLAR111-1512-3040

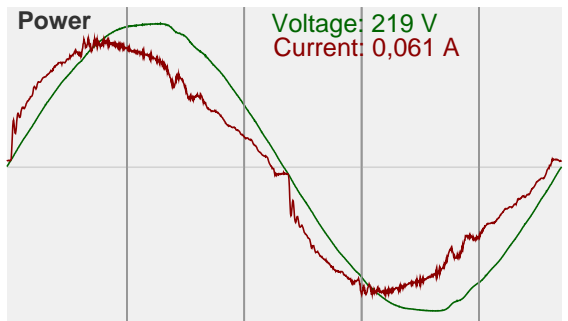
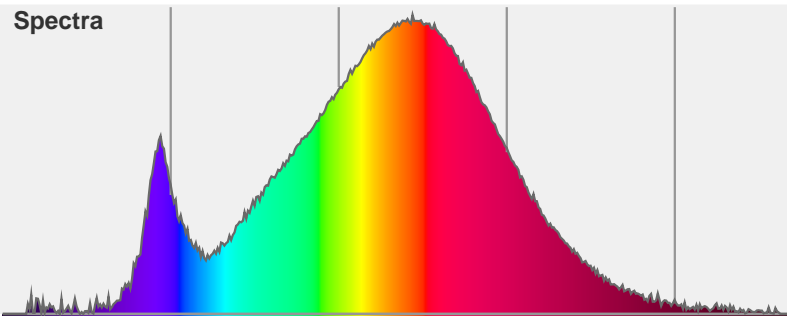
Date and time:
1.9.2015 13:16:08

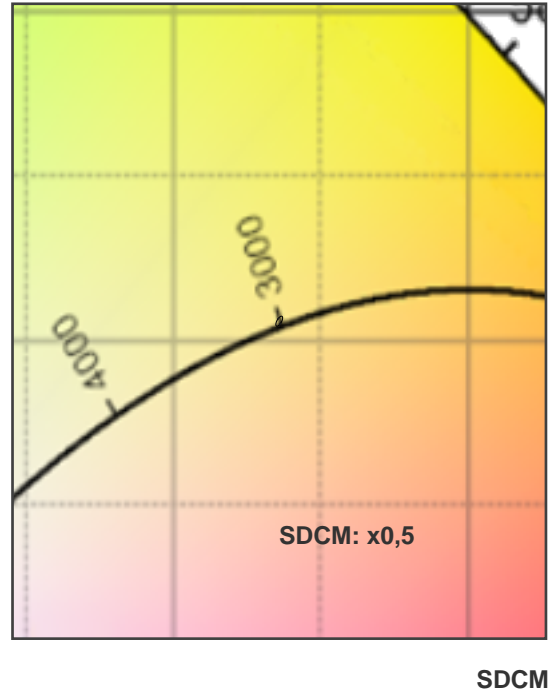
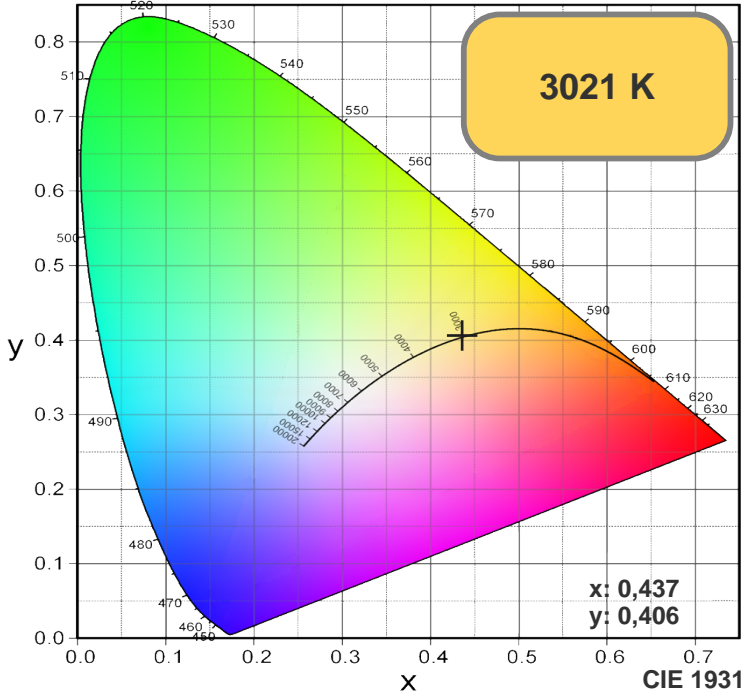
Color



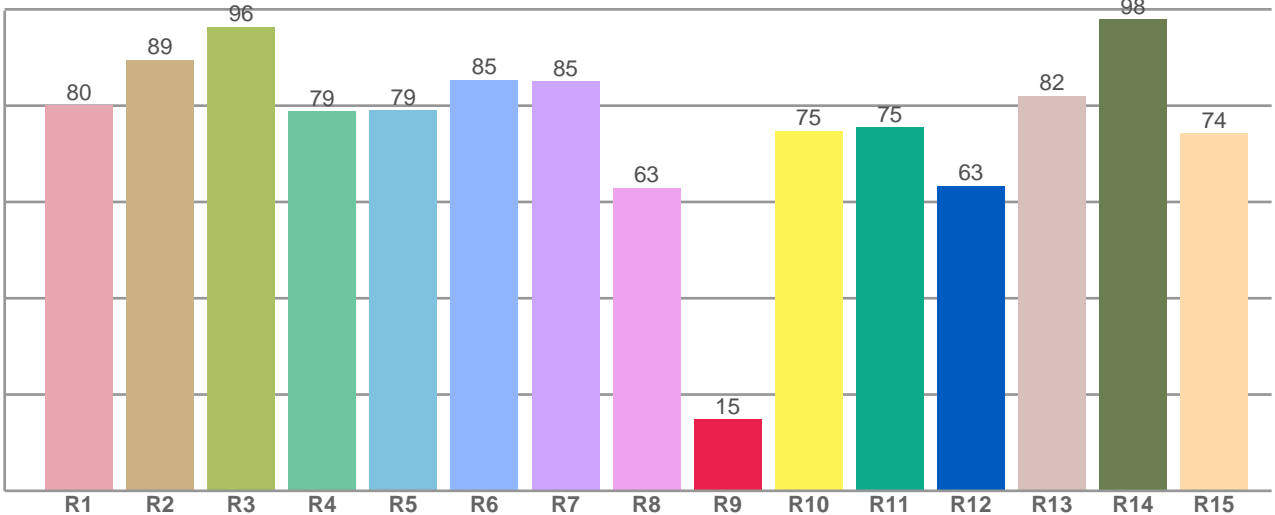
CIE1931
x: 0,437
y: 0,406

Spectra





R1-R8 = CRI: 82,1



R1	R2	R3	R4	R5	R6	R7	R8	R9	R10	R11	R12	R13	R14	R15
79,99	89,49	96,33	78,78	78,94	85,34	85,04	62,87	14,75	74,74	75,45	63,34	81,98	97,89	74,27

Color parameters

Chromaticity coordinates: x=0,437 y=0,406 u'=0,250 v'=0,348
Color temperature: 3021 Kelvin